

# Miller Countrywide, Estate Agents in Cornwall & Devon

---

**Sennen Cove, Penzance, Cornwall, TR19**



**£150,000**

---

A fine opportunity to acquire a plot on Marias Lane, benefiting from superb views and with detailed planning permission granted to construct a reverse level three bedroom detached house.

## Accommodation

### 1 - 3 Bedroom

seeing the Agents 'For Sale' board. Top Cottage can then be recognized from our photographs. Interested parties are able to view externally.

### LOCATION

Nearing the end of Marias Lane, Sennen with fine views over White Sands Bay, Top Cottage looks out over the sea with an adjacent footpath/steps descending to the sea front and village. Sennen is an increasingly popular holiday destination attracting surfers, walkers, beach lovers and those who just want to enjoy the peace and quiet. With highly regarded beach cafe/restaurant and further eating places, local pub and facilities, this is a location of immense and enduring appeal.

### THE PROPERTY

The plot known as Top Cottage. An existing building (intended for demolition) and to be replaced by a three bedroom, two storey reverse level detached house with planning permission granted on application 07/P/0664/F by Penwith District Council on 23 October 2007. Copies of this permission and the detailed plans are available for your inspection at the Penzance Branch of Miller Countrywide. The existing building comprises:

**PORCH:** 1.8m x 1.1m approx.

**DINING AREA:** 5.3m x 2.8m approx

**LOUNGE/DINER:** 2.5m x 2.8m approx

**KITCHEN:** 2.8m x 1.8m approx  
INNER HALL SHOWER ROOM

**BEDROOM ONE:** 2.6m x 1.9m approx

**BEDROOM TWO:** 4.9m x 2.8m  
approx

### SERVICES

Mains water, electricity and drainage. However we have not verified connection.

### VIEWING

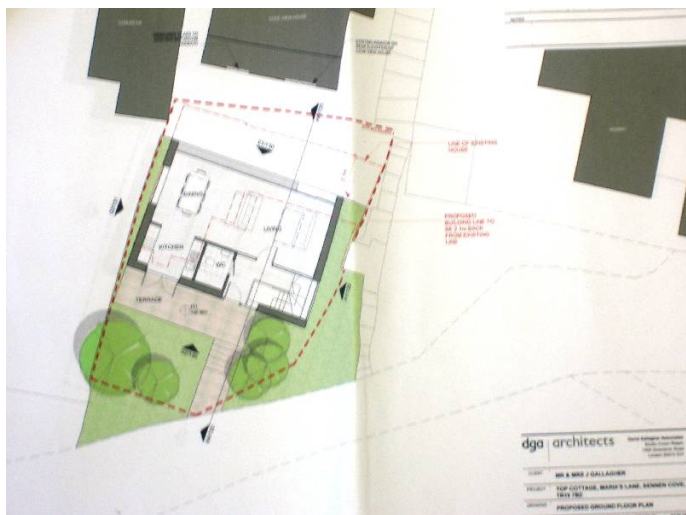
#### DIRECTIONS

From the Penzance branch of Miller Countrywide proceed west on the A30 until reaching the mini-roundabout at the edge of Sennen. Take the second exit and descend partway to the cove and on reaching Marias Lane turn left. Continue along Marias Lane and at the row of Coastguards Cottages bear right along the unmade portion of the lane until

## Pictures



Sennen Cove



Proposed Plans



Proposed Plans.